



SEMEN SERVICES

Your complete source for Wasyn genetics.
Fall 2009 Sire Directory



SEMEN SERVICES

Dear Fellow Wagyu Breeders:

You hold in your hands what is hoped to be an invaluable tool in your quest to take your breeding program to its full potential.

We at V-V Semen Services have recognized a need to gather the available data on as many of the leading bulls as possible into a condensed format. This book affords breeders easy access to the data which allows for easy comparison. Each breeder will be able to make an informed, educated decision for their specific breeding programs.

Our goal was to get as many of the available major bulls possible into this publication for easy comparison and to simplify the buying process. It is no longer necessary for a buyer to go to numerous places to obtain semen. Semen from bulls listed in this book can now be ordered from one place which will drastically cut shipping costs.

All the data we have been able to obtain such as EBVs, 16/16 analysis, progeny data and any commentary from the experts in the breed is included. We have not dealt with any genetic marker programs such as GeneStar®, Igenity® or Exxon, as all bulls have not been tested and we felt it would not be a fair comparison.

It is our hope and desire you will find this book useful. Should you have any questions, please don't hesitate to contact us.

We look forward to serving you.

Sincerely,

Burch Wallace



TERMS AND CONDITIONS

Full payment must be received before order ships unless a prior agreement has been made.

All shipping and tank charges are the buyers responsibility.

All prices are posted. Please check on any minimums as some exceptions may exist.

Volume discounts are available.



SEMEN SERVICES

Burch Wallace

888-277-7331 office • 940-393-6620 cell

vbarvwagyu.com

P.O. Box 70 • Paradise, TX 76073

Shigeshigetani



Shigeshigetani has some of the most powerful genetics in the Wagyu breed. He has Yasumi Doi as well as Yasutanidoi bloodlines but he carries the Kumanami strain as well. The Kumanami family is known for its extremely potent marbling genes. Shigeshigetani is a half brother to the famous bull Michifuku. Note: The World K Group reports 3800 F1s were fed 540 days ADG 2.156. 90% graded 9+ on the Australian scale, meaning 3 full grades above USDA highest grade of prime. The remaining 10% graded 7-9 on the Australian scale and this would be prime to prime + on the USDA scale. Our personal observations are he seems to throw tall, long cattle with good thickness and wonderful dispositions. Semen is very scarce.

Call for semen pricing. • Available in the United States, South America, Australia, Mexico and Canada.

Finishing Performance of F1 Steer Progeny				
Number of finished steers	3800	DG in 540 days finishing period (kg)		0.98
Marbling grade ranges (Aust. Std.)	1-3	4-6	7-9	9 <
Distribution (%)	0	0	10	90

Haruki II	Monjiro	Yasumi Doi
		Harumi
Suzutani 976		Kenshin
	Sakura 2	Itohime 3
	Tanishige 1526 -Kuro Koh	Yasutani Doi
		Tetsushige 5
	Suzunami	Shigeshigenami
		Suzuko

16/16 ANALYSIS

Group	Tajima	Kedaka	Tottori	Itozakura	Shimane	Okayama	Hiroshima	Other	Total
D	12.0	2.0	-	-	-	-	1.0	1.0	16
	75%	13%	0%	0%	0%	0%	6%	6%	

Shigeshigetani has a good combination of Yasumi Doi and Kedaka influence. Tanishige female line produces high marbling and maintains growth.

Sanjirou



Finishing Performance of F1 Steer Progeny				
Number of finished steers	6800	DG in 540 days finishing period (kg)		0.95
Marbling grade ranges (Aust. Std.)	1-3	4-6	7-9	9 <
Distribution (%)	0	0	12	88

Michifuku	Monjirou	Yasumi Doi
		Harumi
		Tanishige
	Michiko	Michifuku
	Tanishige	Yasutanidoi
Suzutani		Tetsushige
		Shigeshigenami
	Suzunami	Yasuchiyo Doi

In the U.S. Sire Summary of 2006, Sanjirou ranked #3 in marbling and was ranked ahead of his sire, Michifuku. Sanjirou is a line bred Yasumi Doi on both sides of his pedigree. His dam was the great cow Suzutani who traces back to Shigeshigenami J10632 who is known for producing top genetics in Japan. He has proven to provide marbling, meat quality, large REA and high yield to his offspring. World K tested this bull with 6800 F1s and 88% graded 9+ on the Australian scale which is prime +++ on the USDA scale. Our personal observation is his calves carry good thickness and eye appeal as well as good dispositions. All the major breeders have used this bull in their herds for their breeding females and there are many sons that have made a mark on the Wagyu breed. He has a solid place for that Tajima blood in your herd. Semen is getting scarce, this may be your last chance to obtain some.

16/16 ANALYSIS

Group	Tajima	Kedaka	Tottori	Itozakura	Shimane	Okayama	Hiroshima	Other	Total
B	16.0	-	-	-	-	-	-	-	16
	100%	0%	0%	0%	0%	0%	0%	0%	

100% Tajima with thoughtful combination of Yasumi-doi and Shigekane-nami Doi. Outstanding marbling ability for F1 and FB production.

ESTIMATED BREEDING VALUES (EBVs)

GL	Bwt	200	400	600	Mwt	Milk	SS	EMA	Rib	Rump	IMF%
+1.6	+1.2	+6	+7	+8	+7	-9	-1.2	+1.8	0.0	+0.9	+0.6
.62	.83	.78	.78	.78	.68	.61	.63	.71	.72	.75	.68

Call for semen pricing. • Available in the United States, South America, Australia, Mexico and Canada.

Michifuku



Michifuku is thought by some to be the most important bull to ever leave Japan and was formally the #1 marbling bull in the U.S. Sire Summary. He is Yasumi Doi on his sire side and Yasutanidoi J472 on the dam's side. Yasutanidoi and Yasumi Doi are 2 of the most famous Tajima sires. It should be pointed out that Michifuku's sire, Monjiro, produced carcasses that sold for \$16,000, \$18,000 and \$21,000 at the 2007 All Japan Wagyu Competition. Please note Michifuku is a great carcass bull but will take away milk according to the EBVs, however, it has been our observation Michifuku calves have good thickness and outstanding marbling and the cattle have excellent dispositions. Most all-major herds in the U.S. and Australia have used this bull extensively and he has many daughters and sons that have made their mark within the breed.

Call for semen pricing. • Available in the United States, South America, Australia, Mexico and Canada.

Finishing Performance of F1 Steer Progeny				
Number of finished steers	12000	DG in 540 days finishing period (kg)		
		1-3	4-6	7-9
Distribution (%)		0	0	15
				9 <
				85

Monjiro	Yasumidoi	Tayasudoi
		Fukumusume
Michiko	Harumi	Tamoridoi
	Tanishige	Kazu
		Yasutanidoi
		Tetsushige
	Michifuku	Dai 13 Kaminaka

16/16 ANALYSIS

Group	Tajima	Kedaka	Tottori	Itozakura	Shimane	Okayama	Hiroshima	Other	Total
B	16.0	-	-	-	-	-	-	-	16
	100%	0%	0%	0%	0%	0%	0%	0%	

ESTIMATED BREEDING VALUES (EBVs)

GL	Bwt	200	400	600	Mwt	Milk	SS	EMA	Rib	Rump	IMF%
+2.1	+0.8	+6	+5	+8	+9	-14	+1.4	+2.8	+0.5	+1.3	+0.7
.91	.98	.97	.97	.95	.94	.92	.95	.94	.95	.96	.93

Haruki II



Finishing Performance of F1 Steer Progeny				
Number of finished steers	4800	DG in 540 days finishing period (kg)		1.1
Marbling grade ranges (Aust. Std.)	1-3	4-6	7-9	9 <
Distribution (%)	0	5	25	70

Monjirou	Yasumidoi	Tayasudoi
		Tamoridoi
Sakura II	Harumi	Kensei
	Kenshin	Yoshiharu 22
	Itohime III	

16/16 ANALYSIS

Group	Tajima	Kedaka	Tottori	Itozakura	Shimane	Okayama	Hiroshima	Other	Total
	56%	13%	19%	6%	0%	6%	0%	0%	

ESTIMATED BREEDING VALUES (EBVs)

GL	Bwt	200	400	600	Mwt	Milk	SS	EMA	Rib	Rump	IMF%
-3.0	+0.3	+21	+33	+44	+53	-1	+0.9	+2.7	+0.5	+1.7	+0.5
.86	.97	.92	.92	.91	.87	.84	.72	.85	.85	.87	.87

Haruki II is probably one of the most under utilized bulls of the breed. Many breeders think he is just of the Tajima strain, but when you look at the 16/16 analysis, you find him to be one of the most balanced bulls we have. He is 56% Tajima, 13% Itozakura, 19% Shimane and 6% Kedaka. Couple this with the fact that he was considered of good enough genetics to breed to arguably the greatest cow in Wagyu history, Suzutani, resulting in that outstanding bull Shigeshigetani. His breed plan show him to be a trait leader in 7 traits ranging from birth weight to growth. He also leads 200, 400, 600 day weights and mature cow size in EMA and IMF.

\$30 per straw. • Available in the United States, South America, Australia, Mexico and Canada.

Kitaguni Jr



Kitaguni Jr is a son of Kitaguni 7-8 whose name is very prominent in current Japanese pedigrees. He is also a grandson of Dai 7 and Itozakura. This line is very famous in Japan. His sons and grandson include Kitaguni 7-8, Itomichi and Itozurodoi 151. Kitaguni Jr is a Fujiyoshi/Shimane bull and when crossed to Tajima cows will increase frame size and enhance growth.

\$30 per straw. • Available in the United States, South America, Australia, Mexico and Canada.

Finishing Performance of F1 Steer Progeny				
Number of finished steers	1800	DG in 540 days finishing period (kg)		0.82
Marbling grade ranges (Aust. Std.)	1-3	4-6	7-9	9 <
Distribution (%)	0	0	35	65

Kitaguni I 7-8	Dai-7 Itozakura	Dai-14 Shige
	Kitaguni 7	Dai 9 Itozakura
Nakayuki I	Koufuku	Harumi
		Morinaka
		Yasuyukidoi
		Michihime
	Nakahana 3	Mifuku 2
		Nakahananano

16/16 ANALYSIS

Group	Tajima	Kedaka	Tottori	Itozakura	Shimane	Okayama	Hiroshima	Other	Total
C	6.0	2.0	-	4.0	2.0	2.0	-	-	16
	38%	0%	0%	25%	26%	13%	0%	0%	

Balanced combination of Itozakura and Tjima. Kitaguni 7 is the #8 bull for marbling in Japan from Fujiyoshi line. Kedaka/Shimane contents to maintain heavy carcass weight and growth. Good maternal, sired for fullblood production.

ESTIMATED BREEDING VALUES (EBVs)

GL	Bwt	200	400	600	Mwt	Milk	SS	EMA	Rib	Rump	IMF%
-	-0.5	+0	-8	-3	-2	+6	+1.1	-1.9	+.04	+.07	+.02
	.88	.80	.80	.72	.50	.30	.68	.69	.74	.77	.88

Takazakura



One of the great foundation bulls of the breed. His sire, Takaie J142, was a great bull and his grandsire, Yasufuku J930, sired 3 of the highest marbling sires in Japan. Yasufuku J930 bloodlines dominated the 2007 Ninth Zenko All Wagyu competition siring one and grandsiring two of the champions. Takazakura is a line bred Yasumi Doi J10328 bull. He has proven the genetics with 1200 F1s fed 540 days ADG 1.87. 68% graded 9+ on the Australian scale. This is 3 full grades above the highest prime on the USDA. 22% graded 7-9 which is prime and prime +. Our observations are he put a lot of length in his calves and very good marbling. Don't let the picture fool you.

\$30 per straw. • Available in the United States, South America, Australia, Mexico and Canada.

Finishing Performance of F1 Steer Progeny				
Number of finished steers	1200	DG in 540 days finishing period (kg)		0.85
Marbling grade ranges (Aust. Std.)	1-3	4-6	7-9	9 <
Distribution (%)	0	10	22	68

Takaie	Yasufuku	Yasutani Doi
		Chizuru
	Takaie	Shigefuji
	Nakatake	Eikou
		Nakaya I
Dai-2 Sakura 7		Dai-2 Toyokuwa
	Dai-2 Sakura	

16/16 ANALYSIS

Group	Tajima	Kedaka	Tottori	Itozakura	Shimane	Okayama	Hiroshima	Other	Total
C	6.0	-	-	-	-	4.0	2.0	4.0	16
	38%	0%	0%	0%	0%	25%	13%	25%	

Takaie is the son of the famous bull Yasufuku who produced outstanding marbling carcass in Japan. Shigefuji from Shigekanenami line to back up the carcass weight and marbling with Okayama line to maintain growth.

ESTIMATED BREEDING VALUES (EBVs)

GL	Bwt	200	400	600	Mwt	Milk	SS	EMA	Rib	Rump	IMF%
-0.8	+1.4	+14	+23	+30	+40	+1	+0.9	+0.0	-0.4	+0.3	+0.1
.64	.82	.80	.80	.77	.68	.59	.71	.71	.71	.73	.65

Yasufuku Jr



Another one of the great Wagyu sires that has a terrible picture. Yasufuku is a son of Yasufuku J930 who sired three of the top marbling bulls in Japan and sired one champion and grandsired two more champions in the 9th Zenko 2007 All Japan Wagyu competition. One carcass sold for \$97,000. Yasufuku Jr has many sons making their mark in this breed. The Australians have rediscovered this bull and are using him heavily. Don't overlook him. Our observation is he throws much better cattle that his picture would lead you to believe with good bodies and very good marbling.

\$40 per straw. • Available in the United States, South America, Australia, Mexico and Canada.

Finishing Performance of F1 Steer Progeny				
Number of finished steers	1200	DG in 540 days finishing period (kg)		0.88
Marbling grade ranges (Aust. Std.)	1-3	4-6	7-9	9 <
Distribution (%)	0	0	22	78

Yasufuku	Yasutani Doi	Yasumi Doi
		Yasumi Doi
	Chizuru	Yasumi Doi
	Monjioru	Yasumi Doi
Kaneko 5		Tamori Doi
	Kaneko	

16/16 ANALYSIS

Group	Tajima	Kedaka	Tottori	Itozakura	Shimane	Okayama	Hiroshima	Other	Total
	100%	0%	0%	0%	0%	0%	0%	0%	

ESTIMATED BREEDING VALUES (EBVs)

GL	Bwt	200	400	600	Mwt	Milk	SS	EMA	Rib	Rump	IMF%
-	-2.1	-6	-11	-8	-2	-7	-	-0.5	-	+0.8	-
	.69	.76	.78	.68	.51	.45		.56		.51	

Donarudo



Finishing Performance of F1 Steer Progeny				
Number of finished steers	800	DG in 540 days finishing period (kg)		0.85
Marbling grade ranges (Aust. Std.)	1-3	4-6	7-9	9 <
Distribution (%)	0	10	20	70

Terutani	Kikuteru Doi	Kiknori Doi
		Tokukane
	Tanifuku 2	Yasutani Doi
	Koufuku	Yukifuku
Nakayuki		Yasuyuki Doi
		Michihime
	Nakahana 3	Mifuku
		Nakahanano

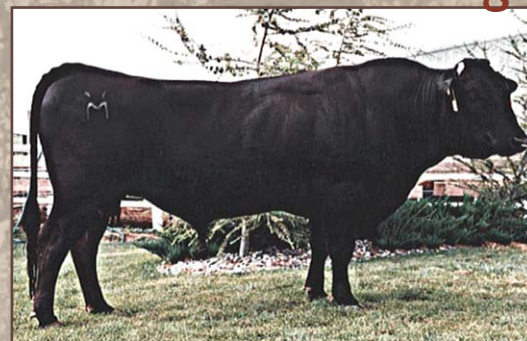
16/16 ANALYSIS

Group	Tajima	Kedaka	Tottori	Itozakura	Shimane	Okayama	Hiroshima	Other	Total
B	14.0	-	-	-	-	2.0	-	-	16
	88%	0%	0%	0%	0%	13%	0%	0%	

High contents of Yasumi Doi and Kikumi Doi to enhance high marbling ability. Suitable for high growth females and F1 production.

\$30 per straw. • Available in the United States, South America, Australia, Mexico and Canada.

Kage



Finishing Performance of F1 Steer Progeny				
Number of finished steers	1200	DG in 540 days finishing period (kg)		1
Marbling grade ranges (Aust. Std.)	1-3	4-6	7-9	9 <
Distribution (%)	0	15	15	70

Kikuhana	Itohana	Dai-7 Itozakura
		Yoshifukuhana
		Dai-7 Itozakura
	Nayori I	Nayori
	Kitaguni 7-8	Dai-7 Itozakura
Reiko		Kitaguni 7
		Monjirou
	Okahan	Toshihana

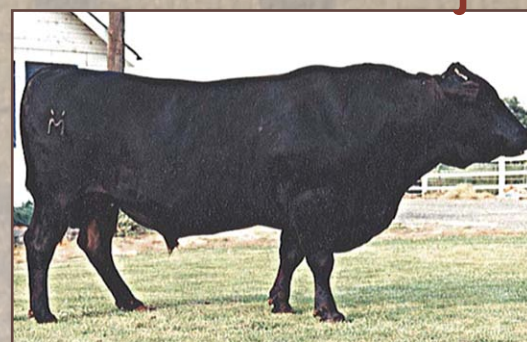
16/16 ANALYSIS

Group	Tajima	Kedaka	Tottori	Itozakura	Shimane	Okayama	Hiroshima	Other	Total
C	2.4	2.0	0.3	9.4	1.5	-	-	0.5	16
	12%	12%	0%	56%	12%	0%	0%	6%	

High Itozakura content to maintain good growth and heavy carcass weight. Kitaguni 7 - 8 is the most famous bull in Japan for high marbling Fujiyoshi bull. Great maternal sire for fullblood production.

\$30 per straw. • Available in the United States, South America, Australia, Mexico and Canada.

Beijiro



Finishing Performance of F1 Steer Progeny				
Number of finished steers	2000	DG in 540 days finishing period (kg)		1.05
Marbling grade ranges (Aust. Std.)	1-3	4-6	7-9	9 <
Distribution (%)	0	5	30	65

Haruki 2	Monjirou	Yasumi Doi
		Harumi
	Sakura II	Shigeshigenami
	Okushige	
Okutani		Kikutani
	Fujitani	

16/16 ANALYSIS

Group	Tajima	Kedaka	Tottori	Itozakura	Shimane	Okayama	Hiroshima	Other	Total
C	9.0	2.0	-	3.0	-	-	1.0	1.0	16
	56%	13%	0%	19%	0%	0%	6%	6%	

Good combination of Yasumi Doi and Shigeshigenami for marbling ability. Itozakura/Kedaka female line to produce heavy CWT and growth.

\$30 per straw. • Available in the United States, South America, Australia, Mexico and Canada.

JVP Fukutsuru 068



Dai 2 Yasuturu Doi Yaasumi Doi Tayasu Doi
 Fukumusume
 Kikumi Doi
 Syoufuku
Teruyasu Kikutsuru Kikunori Doi
 Kikuteru Doi Tokukane
 Yasutani Doi
 Yasutsuru Kikutsuru 8

16/16 ANALYSIS

Group	Tajima	Kedaka	Tottori	Itozakura	Shimane	Okayama	Hiroshima	Other	Total
B	16.0	-	-	-	-	-	-	-	16
	100%	0%	0%	0%	0%	0%	0%	0%	

100% Tajima with high Yasumi Doi contents. Dai 2 Yasuturu Doi had outstanding progeny test results with BMS 4.4 but low DG (0.76). Perfect F1 terminal sire and marbling improvement with high growth females in fullblood production.

ESTIMATED BREEDING VALUES (EBVs)

GL	Bwt	200	400	600	Mwt	Milk	SS	EMA	Rib	Rump	IMF%
-2.0	-2.8	-7	-8	-19	-30	+7	-2.6	-5.9	-0.6	-0.5	-0.1
.70	.90	.90	.90	.89	.83	.88	.82	.81	.82	.84	.77

068 is the #1 marbling sire in the U.S. Sire Summary. 068's grandsire is Yasumi Doi J10328 and his grand dam is Kikutsuru J978542 which was known as the Hygo cow. 068 traces back two times to the Hygo cow. He also traces back twice to Yasumi Doi, the sire of Monjiro and grandsire of Yasufuku 930. 068 is proof of his genetics and has been shown to pass these marbling genetics on to his progeny. Our observation is his offspring are smaller framed, have a lower growth rate and cross very well with Shimane bloodlines. His offspring also have very good dispositions. There are only 300 straws available and these may be some of the last that will be sold. Don't miss out.

Call for semen pricing. • Available in the United States.

TF Itomichi 1/2



Itomichi 1/2 is sired by Itomichi and grandsired by Shimane's most well know bull, Dai7 Itozakura crossed with Dai2 Kintou. Itomichi 1/2 dam's grandsire is 100% Tajama. This bull's genetics consist of 13% Tajama, 2% Kadaka, 85% Shimane. This bull still exists in the U.S. and his estimated weight is over 2000 lbs.

Itomichi 1/2 has been used to increase mature size and growth rate without reducing marbling. We really like the cattle we have from him. They have good volume, length and great spring of rib. His daughters have great maternal traits and will make you top mamma cows.

\$60 per straw. • Available in the United States, South America, Australia and Mexico.

Itomichi

Dai-7 Itozakura

Dai-14 Shigeru
Dai-9 Itozakura
Daidou

Tomisakae 2/1
Dai-3 Kiyohime

Tomisakae
Fukukanenami
Kiyohime
Dai-7 Toyokuwa
Ezo-Kintou

Dai-2 Kinto

Ezo-Kino 1A

16/16 ANALYSIS

Group	Tajima	Kedaka	Tottori	Itozakura	Shimane	Okayama	Hiroshima	Other	Total
	13%	2%	0%	0%	85%	0%	0%	0%	

ESTIMATED BREEDING VALUES (EBVs)

GL	Bwt	200	400	600	Mwt	Milk	SS	EMA	Rib	Rump	IMF%
+2.3	+1.6	+12	+19	+18	+20	+9	+0.4	+2.8	+1.1	+1.0	+0.2
.88	.95	.91	.92	.90	.80	.80	.50	.73	.70	.73	.63

TF Itohana 2



Itohana 2 is a product of an ideal matching and has Dai 7 in all four legs of his pedigree. This will bring increased frame size. His daughters exhibit excellent maternal traits, good milking ability and good mature cow size. Itohana 2's dam was the great cow, Aino 6. There were 17 calves slaughtered from the Aino group and all graded A5 on the Japanese scale which is the highest grade possible.

\$60 per straw. • Available in the United States, South America, Australia and Mexico.

Itohana	Dai-7 Itozakura	Dai-14 Shigeru Dai-9 Itozakura Dai-7 Itozakura
	Yoshifukuhana Itomichi	Dai-4 Fukuhana Dai-7 Itozakura
Aino 6	Aino 5	Tomisakae 2/1 Dai-3 Kiyohime Aino

16/16 ANALYSIS

Group	Tajima	Kedaka	Tottori	Itozakura	Shimane	Okayama	Hiroshima	Other	Total
	6%	0%	34%	3%	50%	0%	6%	0%	

ESTIMATED BREEDING VALUES (EBVs)

GL	Bwt	200	400	600	Mwt	Milk	SS	EMA	Rib	Rump	IMF%
-0.5	+1.4	+9	+15	+16	+20	+3	+0.9	+0.6	+0.3	-0.3	+0.0
.80	.93	.90	.91	.90	.81	.55	.50	.75	.71	.73	.63

TF147 Itoshigefuji



Sired by Itofuji and out of Dai-30 Noboru dam. Itofuji was made between Dai-7 Itozakura and Hirota 1 (she has Dai-6 Fujiyoshi blood line on her sire side.)

Dai-30 Norou was a descendant of Okayama's original bull called Takenotani Tsuru and goes back 300 years. Later this same bull was called Noboru. Noboru has been used in the Okayama strain generation after generation. Dai 30 Norboru's dam was sired by Itofuji and her dam by Dai-10 Noboru. Noboru is one of the typical large frame cattle in the Okayama strain. This bull consists of 56% Shimane, 41% Okayama and 3% Kedaka therefore, you can expect a larger frame with adequate marbling.

Based on Australia's fullblood carcass data, TF147 has an average carcass weight of 1150 lbs and an average beef marbling score of 8.5 out of 9 on the Australian marbling scale.

David Blackmore, a leading Australian breeder, states 147's daughters are his favorite brood cows and can make a living on pasture. Our observation would totally agree. 147 adds milk as well as strength to his progeny. This bull has a prominent place in the Wagyu breed.

\$60 per straw. • Available in the United States, South America, Australia and Mexico.

Itofuji	Dai-7 Itozakura	Dai-14 Shigeru
	Hirota 1	Dai-9 Itozakura
	Itomichi	Dai-6 Fujimori
		Hirota
Dai-30 Noboru	Dai-10 Noboru 3	Dai-7 Itozakura
		Tomosakake 2/1
		Itofuji
		Dai-10 Noboru

16/16 ANALYSIS

Group	Tajima	Kedaka	Tottori	Itozakura	Shimane	Okayama	Hiroshima	Other	Total
	0%	3%	0%	0%	56%	41%	0%	0%	

ESTIMATED BREEDING VALUES (EBVs)

GL	Bwt	200	400	600	Mwt	Milk	SS	EMA	Rib	Rump	IMF%
-0.7	+3.1	+15	+28	+30	+35	+7	+0.7	+0.5	-0.2	-0.6	-0.2
.81	.94	.93	.93	.92	.80	.45	.74	.78	.74	.76	.65

TF148 Itoshigenami



Sired by Shigeshigenami and dam by Fukuyuke. His grandsire was Shigekanenami and his maternal great grandsire was Shigekanenami. There are three different strains of Tajami: Okudo, Nakadoi and Nami. Shigekanenami was one of the most typical Nami bulls. TF148's sire, Shigeshigenami, was made double crossing Shigekanenami on the sire side and also on the maternal side to enhance marbling.

TF148's dam was Fukuyuki and her grandsire is Shigekanenami and on her maternal side the sire was Dai 7 Itozakura. Therefore TF148 should produce an adequate frame with great marbling. This bull consists of 75% Tajami, 19% Shimane and 6% Kedaka.

Based on an Australian fullblood breeder's carcass data, TF148 average carcass weight is 970 lbs. and an average beef marbling score of 8.6 out of their marbling 1-9 scale.

Our observation is this bull is a major marbling bull and has thrown many outstanding calves who grow well, marble well and have great dispositions.

\$60 per straw. • Available in the United States, South America, Australia and Mexico.

Shigeshigenami

Shigekanenami

Shigefuku
Tatsumi
Shigekanenami
Mitsuko
Shigekanenami
Fukukono 8
Dai-7 Itozakura
Mitsuhanu

Fukuvuki

Yukizakura

16/16 ANALYSIS

Group	Tajima	Kedaka	Tottori	Itozakura	Shimane	Okayama	Hiroshima	Other	Total
	75%	6%	0%	0%	19%	0%	0%	0%	

ESTIMATED BREEDING VALUES (EBVs)

GL	Bwt	200	400	600	Mwt	Milk	SS	EMA	Rib	Rump	IMF%
+1.0	-1.1	+2	+2	+6	+2	+1	-0.9	+1.7	+1.0	+1.2	+0.5
.84	.97	.96	.96	.96	.87	.71	.94	.94	.95	.95	.92

TF151 Itozurudo



Picture of original 151 not the clone.

CLONE 151 was a very rare breeding. On the sire side he was a cross of Shimane and Kedaka (there are few Kedaka sires available). The dam's side is 100% Tajama made up of two of the three Tajama lines. 151 is deceased now but was a 2400 lb. bull which produced excellent carcasses both in weight and quality. It is reported by one of the leading Wagyu experts who said, "151 beat Michifuku in every statistical category in fullblood Wagyu carcasses."

All the major Australian Wagyu breeders have extensive numbers of 151 daughters in their herds and they comment that these are some of the most important females because of the size and maternal traits they possess. 151 clone has exactly the same DNA as the original and there should be no difference in the progeny. We in the U.S. missed out for the most part on 151 the first time around. Now we have a second chance.

Call for semen pricing. • Available in the United States.

Itokitazuru	Dai-7 Itozakura	Dai-14 Shigeru Dai-9 Itozakura
	Mishizuru Yasumi-Doi	Kitakedaka Higashizuru Tayasu-Doi Fukumusume
Yasuhime	Fujihime	Kikuteru-Doi Fujihime5

16/16 ANALYSIS

Group	Tajama	Kedaka	Tottori	Itozakura	Shimane	Okayama	Hiroshima	Other	Total
	50%	25%	0%	12%	13%	0%	0%	0%	

ESTIMATED BREEDING VALUES (EBVs)

GL	Bwt	200	400	600	Mwt	Milk	SS	EMA	Rib	Rump	IMF%
-0.1	+3.3	+17	+26	+38	+40	+8	-0.7	+1.0	+0.1	-0.8	+0.0
.55	.93	.89	.89	.86	.73	.46	.76	.77	.80	.82	.73

SR Y13 Sanji



Sanji is a great cross of Sanjirou which is linebred Ysumi Doi, to a daughter of Kitateruyasudo 003, one of the great marbling bulls of our time. Sanji's dam is a full sister to 005 Shigefuku 13M's dam. This is a tremendous cow family.

As would be expected being a Sanjirou son, Sanji is well balanced, has great thickness and length and has the thickest loin of any of Sanjirou's sons. Also, as a son of Sanjirou and with the Kitateruyasudo bloodline, he is throwing great marbling in his calves. 500+ calves have been killed so far and none have been lower than prime.

It is reported that when Greg Gibbons of AAA in Australia saw this bull, he said "Sanji was the best bull I have seen outside of Japan." He is using him in their program.

Sanjiro Michifuku Monjiro
Michiko
Tanishige
Suzutani Suzunami
Kitateruyasudo Terunagadoi
Yoshimi3
Kitatemako 003 Itokitadoi
Kitatemako Itofuji

16/16 ANALYSIS

Group	Tajima	Kedaka	Tottori	Itozakura	Shimane	Okayama	Hiroshima	Other	Total
D	10.0	2.0	-	2.3	-	0.8	-	1.0	16
	63%	13%	0%	13%	0%	6%	0%	5%	

High Tajima combinaton of Yasumi Doi/Shigekanenami and Terunaga Doi from ETJ003. Ideal for F1 production or high growth fullblood females.

Our observations are his calves are very thick, very correct and have great dispositions.

This bull is now deceased and semen will become very limited. Sexed and unsexed semen is available.

\$50 per straw UNSEXED SEMEN and \$75 per straw SEXED SEMEN. • Available in South America, Australia, Mexico and Canada.

005 Shigefuku 13M



This bull is a total outcross to the Wagyu genetics. His sire is the highest content Kedaka bull outside of Japan and, to the best of our knowledge, there are only two sons and two daughters of Shigefuku J 1822 in the world. When the Westholme group saw this bull they said he was the most promising bull at that time in the world. This bull is well balance, long, good spring of rib, very easy keeping kind of bull who has a thick loin, great feet and legs and he brings a lot of milk to his daughters. He is also a great marbling bull and all the calves killed thus far are BMS score 8-10 which is prime + to prime ++. Sexed and unsexed semen is available.

Shigefuku

Dai 20 Hirashige

Kedaka
Japanese Cow
Hayanobu
Kitafuji
Terunagadoi
Yoshimi3
Itokitadoi
Itofuji

Morikita
Kitateruyasudo

Westholme Itoyasudo

Kitatemako

16/16 ANALYSIS

Group	Tajima	Kedaka	Tottori	Itozakura	Shimane	Okayama	Hiroshima	Other	Total
C	5.0	7.0	2.0	1.1	-	0.4	-	-	16
	31%	44%	12%	6%	0%	0%	0%	0%	

High Kedaka content with ETJ005 Shigefuku. ETJ005 is one of the highest Kedaka contents bull in Australia and strong marbling with good growth. The combination with ETJ003 Ketateruyasudo to maintain marbling.

**\$50 per straw UNSEXED SEMEN
and \$75 per straw SEXED SEMEN.**

**• Available in South America,
Australia, Mexico and Canada.**



005 son at side.

UKB Dia 6 Kitaseki



Kitaseki is another total outcross to all herds in North, South and Central America. One noted Wagyu expert stated, "This bull is the answer to the growth issues within the Wagyu breed." This bull has extreme growth, great length with a strong loin and is correct in the feet and legs with excellent depth of body.

Our observation is his progeny are big, thick calves with great dispositions.

His daughters are big, correct kind of cows with plenty of milk.

The calves killed thus far have all had a BMS score of 8-10 and that would be prime + to prime ++.

\$75 per straw. • Available in the United States.

Dai 6 Seizan

Shinmori Doi 587

Mori 1
Kanehagi
Itofuji 483
Seizan 8
Yuhou
Maeta
Itokitazuru
Nakata 13

Seizan 17
Dai 8 Yuhou

Kitasekihiro

Sekinakada 28

16/16 ANALYSIS

Group	Tajima	Kedaka	Tottori	Itozakura	Shimane	Okayama	Hiroshima	Other	Total
C	2.0	1.9	4.0	2.6	.5	4.0	-	-	16
	12%	12%	25%	19%	6%	25%	0%	0%	

Growth and maternal characteristics from Tottori/Kedaka line and CWT from Itozakura. Dai 8 Yuhou is an old Tottori bull who was known to add good frame to his calves and high milking ability to his daughters. Dai 6 Seizan is Itozakura/Tajima cross to improve marbling growth.



Kitaseki daughter.



Kitaseki son.

RSC Fuku-Yasu 2613



Here he is! This bull had a 17.99 inch ribeye at 20 months. He carries Mitch 068 and Yasafuku Jr. in one bull. He is the total package with length, depth, marbling with a strong loin and has good feet and legs.

One noted Wagyu expert stated "This bull has a very good chance to be the next Mich or Sanjirou." His first calves are on the ground; full bloods, F1 Angus, Braunvieh and Holstein, and the results are this bull is for real. They are the thickest Wagyu cattle we have ever seen with good length, extreme depth and good dispositions.

\$100 per straw. • Available in South America, Australia, Mexico and Canada.

Fukutsuru 068

Dai 2 Yasutsuru Doi

Yaasumi Doi
Kikutsuru
Kikuteru Doi

Teruyasu
Yasufuku Jr

Yasutsuru
Yasufuku
Kaneko 5
Michifuku

BR Ms Yasufuku 0608

WSU 308

JVP Ms Kikuchisa 19E

16/16 ANALYSIS

Group	Tajima	Kedaka	Tottori	Itozakura	Shimane	Okayama	Hiroshima	Other	Total
C	15.0	-	-	0.3	-	0.3	-	0.5	16
	94%	0%	0%	0%	0%	0%	0%	6%	

Heavy line breeding of Yasutani-Doi/Yasumi-Doi. High marbling ability. Suited for F1 production or terminal.



F1 2613 daughter out of a Branvieh cow.



2613 daughter at side.

JVP Yasutanisakura 931



Yasukane 1682
 Yasutani Doi
 Kaneko
 Tanimizu
 Nakatani
 Nakayoshi-4

Yasu Yoshidoi
 Itsuhime
 Tamori Doi
 Japanese Cow
 Dai 7 Itozakura
 Japanese Cow
 Dai 2 Watase-12
 Japanese Cow

16/16 ANALYSIS

Group	Tajima	Kedaka	Tottori	Itozakura	Shimane	Okayama	Hiroshima	Other	Total
C	8.0	-	-	2.0	2.0	-	-	4.0	16
	50%	0%	0%	13%	13%	0%	0%	25%	

Strong Tajima contents with Itozakura dam line. Tanimizu has superior DG (0.93) and marbling (BMS 3) at progeny tests. Yasukane is 100% Tajima sire with Yasmi-Doi/Shigehanenami combination.

This bull has been overlooked for the most part in the U.S. He brings great body mass structure and top maternal traits to his progeny. His daughters have a lot of milk and will make some of the best brood cows in your herd. His sons will bring that same growth, balance and milk to their progeny.

Our observation is these are just good doing kind of cattle and 931 works well on the World K bloodlines.

\$40 per straw. • Available in the United States, South America, Australia, Mexico and Canada.



931 daughter.

JVP Kikuyasu-400



Kikuyasu Doi 575
 Kikunori Doi
 Murayoshi
 Kikuteru Doi
 Fukuyoshi
 Fukuuchiyoshi

Kikumidoi
 Tamaru
 Yasuchiyo Doi
 Japanese Cow
 Kikunori Doi
 Japanese Cow
 Kikuyasu Doi
 Japanese Cow

16/16 ANALYSIS

Group	Tajima	Kedaka	Tottori	Itozakura	Shimane	Okayama	Hiroshima	Other	Total
	100%	0%	0%	0%	0%	0%	0%	0%	

ESTIMATED BREEDING VALUES (EBVs)

GL	Bwt	200	400	600	Mwt	Milk	SS	EMA	Rib	Rump	IMF%
+0.0	-0.2	+5	+0	+5	-7	-10	-1.2	-0.8	+0.2	+0.3	+0.2
.53	.85	.87	.88	.88	.82	.65	.66	.79	.78	.79	.73

Kikuyasu 400 was selected as one of the bulls to import from Japan because of the record of his sire, Kikuyasudo. His progeny have a reputation for excellent carcass quality and Kikuyasu 400 is carrying on that tradition. Kikuyasu sired Kinu T077 whose progeny to date have all graded prime to prime +. Kikuyasu is by far the largest Tajima sire ever exported from Japan weighing 1980 lbs. and holds the record for the largest ribeye area. Our experience is he throws tall cattle but does decrease milk. He crosses well on Itozakura and Fujiyoshi/Shimane lines.



400 daughter.

\$45 per straw. • Available in the United States, South America, Australia, Mexico and Canada.

Bar R Sanjirou 44K



This is the 11th ranked bull in the AWA Sire Summary for marbling. We were very excited when this bull came up for sale from Jerry Reeves at Bar R Wagyu. Jerry stated when we purchased this bull that the reason he was only 11th was that there had not been enough progeny data gathered on him and that as soon as more data was gathered we would see this bull climb rapidly in the standings. This bull not only brings marbling but good frame being a Sanjirou son and he also throws very correct, good top line, thick progeny. This takes all of the guess work out of his progeny and he is being used over some of our big cows to bring out even more marbling as well as extensively in our F1 program.

Sanjirou

Miss Bar R 18H

Miohifuku

Suzutani
Blue Rock Haruki

JVP Ms Kikushige 24F

Monjiro
Michiko
Tanishige
Suzunami
Haruki 2
JVP Fukutomi 990
JVP Kikuyasu-400
JVP Yuriko-1 050

We have sold extensive semen to the commercial Angus industry and for making steers for carcass contests. We would encourage you to look at this bull to make those good kind of F1s. We have a commercial volume program available.

\$40 per straw. • Available in the United States.



44K sons and daughters.

Z278 Hirashigetayasu



Hirashigetayasu J2351

Dai 20 Hirashige

Kedaka
Dai 13 Hirashige
Tayasufuku

Yurihime
Kitateruyasudo J2810

Yuriko
Terunaga Doi
Yoshimi
Itomoritaka J2703
W277

X106 Ohyurihime

U38 Moritake

We are very excited about this bull as he has all three of the Westholme original import bulls in his pedigree. He is a son of Hirashigetayasu 001 out of a cow who is a daughter of Kitateruyasudo 003 and his great grandsire is Itomoritaka 002. Z278 is a great balance of Kedaka Fujiyoshi and Tajima and is a very thick and correct bull. His daughters have good udders and his calves are born easily even though they are a little larger than the average Wagyu calves. We are breeding to this bull on some of our most valuable cows.

16/16 ANALYSIS

Group	Tajima	Kedaka	Tottori	Itozakura	Shimane	Okayama	Hiroshima	Other	Total
C	7.1	4.0	1.8	0.5	-	2.3	0.1	0.3	16
	44%	25%	12%	6%	0%	12%	0%	1%	

Well balanced Tajima/Kedaka combination. Hirashigetayasu is a high growth and good marbling sire from Westholme.

ESTIMATED BREEDING VALUES (EBVs)

GL	Bwt	200	400	600	Mwt	Milk	SS	EMA	Rib	Rump	IMF%
+1.3	+4.3	+23	+35	+40	+38	+6	+1.5	+1.8	-0.4	-0.9	-0.3
.57	.70	.82	.79	.79	.69	.57	.67	.73	.75	.78	.71

\$50 per straw. • Available in the United States, South America, Mexico and Canada.



Z278 calf at side.



Z278 daughter.

Kalanga Red Star C402



Heart Brand Red Star

Shigemaru

MTA Akiko
Hikari

Kalanga Hikohomare VW36

RWA Homare Blue 2

Dai 2 Shigenami
Dai 4 Akibare
Namimaru
Mitsuko B
Dai 10 Mitsumau
Kazutomo
Judo
JVP 27 Homare

Finally a fullblood Red Wagyu bull available for the U.S. as well as South and Central America and Mexico. But not just any red bull. Red Star beats Shigemaru, Hikari and Heartbrand Red Emperor handily in the breed plan EBVs. The Wagyu breed has been needing the Red genetics as they bring size, meat and milk to the breed. They also excel at marbling on grass and their rate of gain on grass or feed is exceptional. The Reds are used in Brazil for crossing on Angus, Hereford as well as Nelore and the carcasses are first rate, both from grass and in the feed lot. Semen is limited.

\$65 per straw. • Available in the United States, South America, Australia, Mexico and Canada.

UKB Mr. Ume Homaru



Visi Umenaru

Hikari

Kaedemaru
Judo

JVP 702 Homare-27

JVP 27-Homare 128

Dai Jyuu N Itsumar 76100
Kazutomo 92958
Dai Jyuu N Itsumar 76100
Dai-San N Haiki
Shigetakara H40
Sakae
Namimaru 74
No 20-Homare

This young bull is another genetically superior power packed bull of the Red Wagyu strain. He is a son of Umermaru and a grandson of Hikari on the paternal side and out of an own daughter of Judo. He is going to cross extremely well on Kalanga Red Star daughters. Between the two bulls in this book, you will have very good coverage of the Red genetics. This young bull is going to be very correct with extreme thickness and marbling ability.

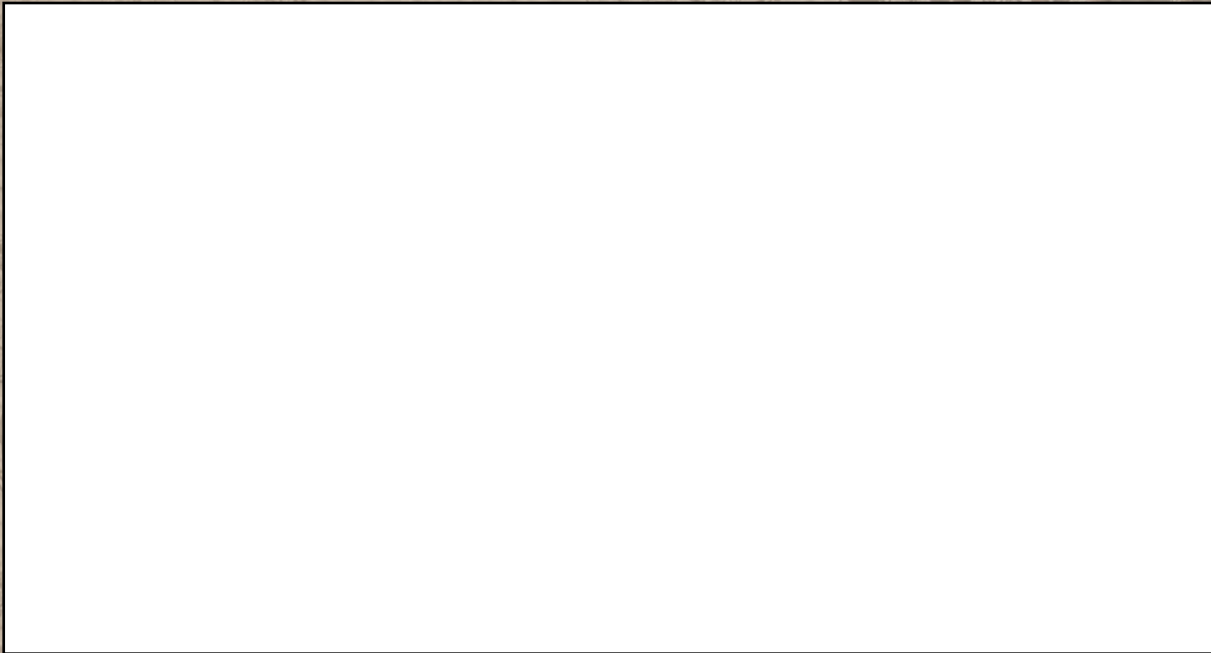
We fully anticipate his daughters to be some of the favorite cows in your herd. He will also cross extremely well on the Black genetics.

\$65 per straw. • Available in the United States, South America, Australia, Mexico and Canada.



SEMEN SERVICES

P.O. Box 70 • Paradise, TX 76073



Shigeshigetani	Page 1	TF147 Itoshigefuji	Page 11
Sanjirou	Page 2	TF148 Itoshigenami	Page 12
Michifuku	Page 3	TF151 Itozurudoi	Page 13
Haruki II	Page 4	SR Y13 Sanji	Page 14
Kitaguni Jr	Page 5	005 Shigefuku 13M	Page 15
Takazakura	Page 6	UKB Dia 6 Kitaseki	Page 16
Yasufuku Jr	Page 6	RSC Fuku-Yasu 2613	Page 17
Donarudo	Page 7	JVP Yasutanisakura	Page 18
Kage	Page 7	JVP Kikuyasu-400	Page 18
Beijiro	Page 7	Bar R Sanjirou 44K	Page 19
JVP Fukutsuru 068	Page 8	Z278 Hirashigetayasu	Page 20
TF Itomichi 1/2	Page 9	Kalanga Red Star C402	Inside Back Cover
TF Itohana 2	Page 10	UKB Mr. Ume Homaru	Inside Back Cover

Make plans to attend the Texas Wasyu Association Inaugural Sale
Saturday, March 13, 2010 • Fort Worth Stockyards, Fort Worth, Texas